



**arfiMove MR134-LF**  
**134,2 kHz**  
**ISO11784/5, BDE**  
**LF RFID**  
**Bluetooth**  
**Reader / Writer**

<b>Product:</b>	Mobile BLUETOOTH RFID/NFC Reader / Writer for 134,2 kHz ISO11784/5 TAGs	
<b>RFID / NFC TAGs supported:</b>	NXP FDX-B: Hitag S, Hitag 2, Hitag μ, EM4305, ATMEL Q5 TI HDX TAG series, SIC7999 HDX	
<b>Read Range:</b>	Up to 80 mm	(Depends on RFID TAG type and shape)
<b>Frequency:</b>	134,2 kHz	(At room temperature 20°C)
<b>ISOStandards/Norms:</b>	ISO11784/5	,EN14803, BDE
<b>Dimensions/Housing/Display:</b>	120 mm x 65 mm x 32 mm, ABS housing	Farbdisplay: 160 x 128 Pixel
<b>Interfaces/Memory:</b>	BLUETOOTH	2 GByte Micro SD memory
<b>Power Supply/Keyboard:</b>	AAA Standard rechargeable batteries Optional accessory: Inductive charger	12 keys with shift foil keyboard
<b>Status Indicator/ IP Rate:</b>	Buzzer	IP65
<b>Operating / Storage Temperature:</b>	-10°C ... + 60°C	-20°C ... + 60°C
<b>Certification:</b>		<b>RoHS</b> ✓
<b>Part Description:</b>	arfiMove LF-MR134-HDX-FDX-B	

arfidex GmbH | Adlerstraße 2 | D-63322 Rödermark | Germany | Phone: +49 (0) 6074 861930

<https://www.arfidex.de> | [info@arfidex.de](mailto:info@arfidex.de)

© arfidex makes no warranty, representation, or guarantee regarding the information contained herein or the suitability of its products and services for any particular purpose, nor does arfidex assume any liability whatsoever arising out of the application or use of any product or circuit. The products sold hereunder and any other products sold by arfidex have been subject to limited testing and should not be used in conjunction with mission-critical equipment or applications. Any performance specifications are believed to be reliable but are not verified, and Buyer must conduct and complete all performance and other testing of the products, alone and together with, or installed in, any end-products. Buyer shall not rely on any data and performance specifications or parameters provided by arfidex. It is the Buyer's responsibility to independently determine suitability of any products and to test and verify the same. The information provided by arfidex hereunder is provided "as is, where is" and with all faults, and the entire risk associated with such information is entirely with the Buyer. arfidex does not grant, explicitly or implicitly, to any party any patent rights, licenses, or any other IP rights, whether with regard to such information itself or anything described by such information. Information provided in this document is proprietary to arfidex, and arfidex reserves the right to make any changes to the information in this document or to any products and services at any time without notice.



**arfiMove MR134-LF**  
**134,2 kHz**  
**ISO11784/5, BDE**  
**LF RFID**  
**Bluetooth**  
**Reader / Writer**

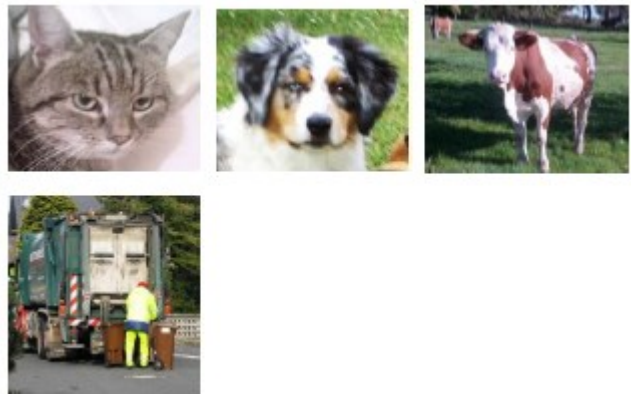
This RFID reader is used by system integrators or endusers to read and write LF 134,2 kHz ISO11784/5 (LF tags), and to send the data to Windows host PC, tablet etc.

The basic system provides important applications like reading and writing of tags. Customers can build their own apps to suit to their applications.

The built in time and date function as well as the on board memory allows inventory applications and data collection.

**Applications:**

- ◆ Animal ID
- ◆ Asset management (Waste management bin collection)
- ◆ Industrial ID
- ◆ Inventory
- ◆ Logistics
- ◆ Maintenance, Service, Inspection
- ◆ Your application




---

arfidex GmbH | Adlerstraße 2 | D-63322 Rödermark | Germany | Phone: +49 (0) 6074 861930

<https://www.arfidex.de> | [info@arfidex.de](mailto:info@arfidex.de)

© arfidex makes no warranty, representation, or guarantee regarding the information contained herein or the suitability of its products and services for any particular purpose, nor does arfidex assume any liability whatsoever arising out of the application or use of any product or circuit. The products sold hereunder and any other products sold by arfidex have been subject to limited testing and should not be used in conjunction with mission-critical equipment or applications. Any performance specifications are believed to be reliable but are not verified, and Buyer must conduct and complete all performance and other testing of the products, alone and together with, or installed in, any end-products. Buyer shall not rely on any data and performance specifications or parameters provided by arfidex. It is the Buyer's responsibility to independently determine suitability of any products and to test and verify the same. The information provided by arfidex hereunder is provided "as is, where is" and with all faults, and the entire risk associated with such information is entirely with the Buyer. arfidex does not grant, explicitly or implicitly, to any party any patent rights, licenses, or any other IP rights, whether with regard to such information itself or anything described by such information. Information provided in this document is proprietary to arfidex, and arfidex reserves the right to make any changes to the information in this document or to any products and services at any time without notice.